



MANHATTAN
COMFORT

888-230-2225

help@manhattancomfort.com



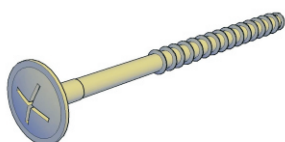
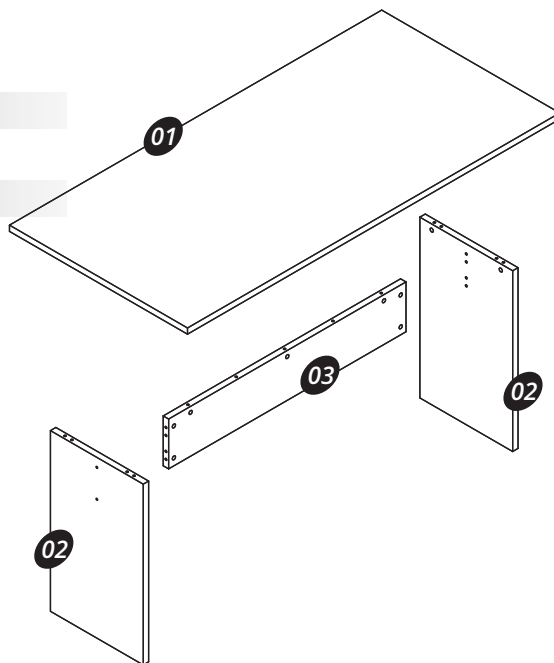
Nomad
dining table

Included in the package

01 - Top Panel = 01 piece

02 - Legs = 02 pieces

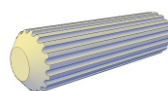
03 - Crossbar = 01 piece



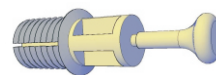
A = 04x



B = 04x



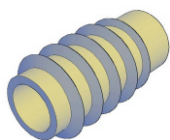
C = 10x



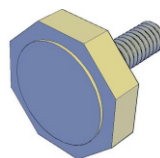
D = 07x



E = 07x



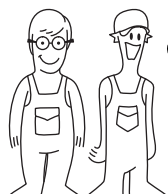
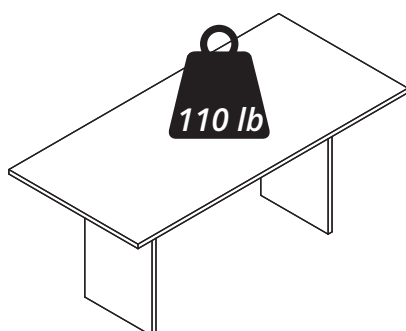
F = 04x



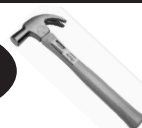
G = 04x



H = 11x



Tools needed
(not included)

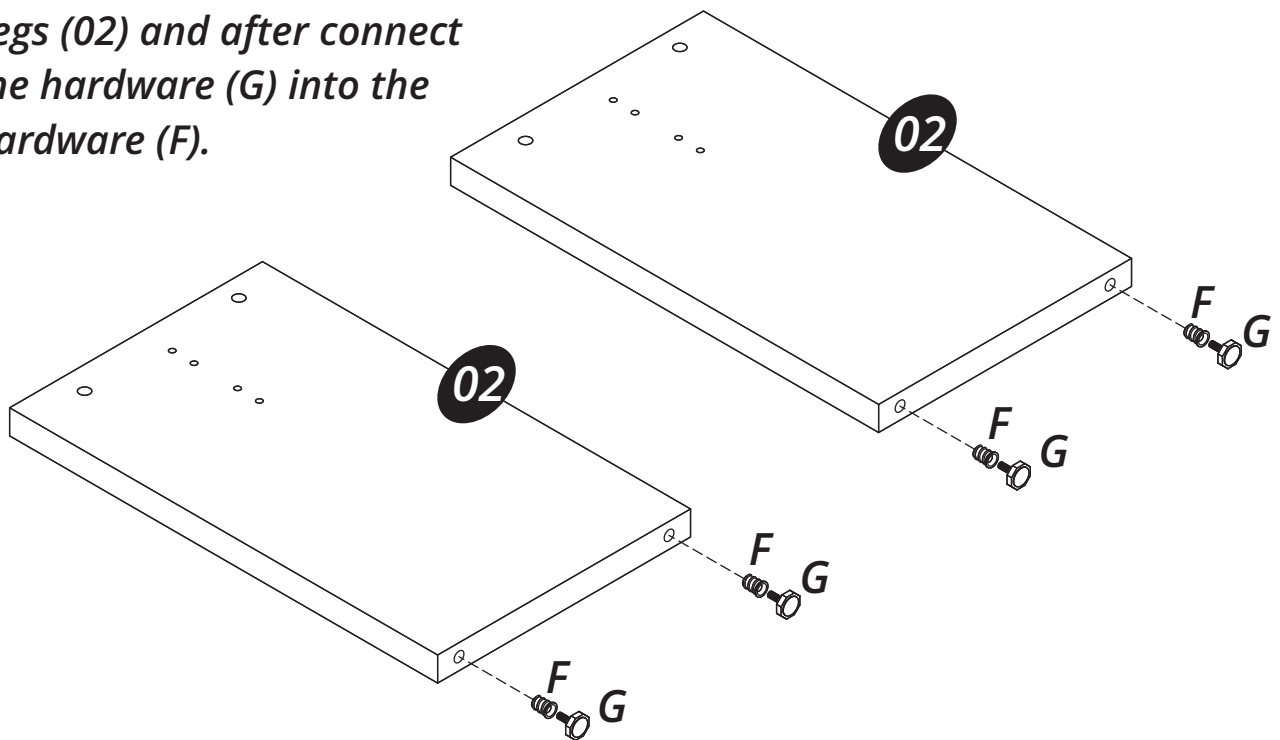


⊕ Phillips screw driver

⊖ Screw driver

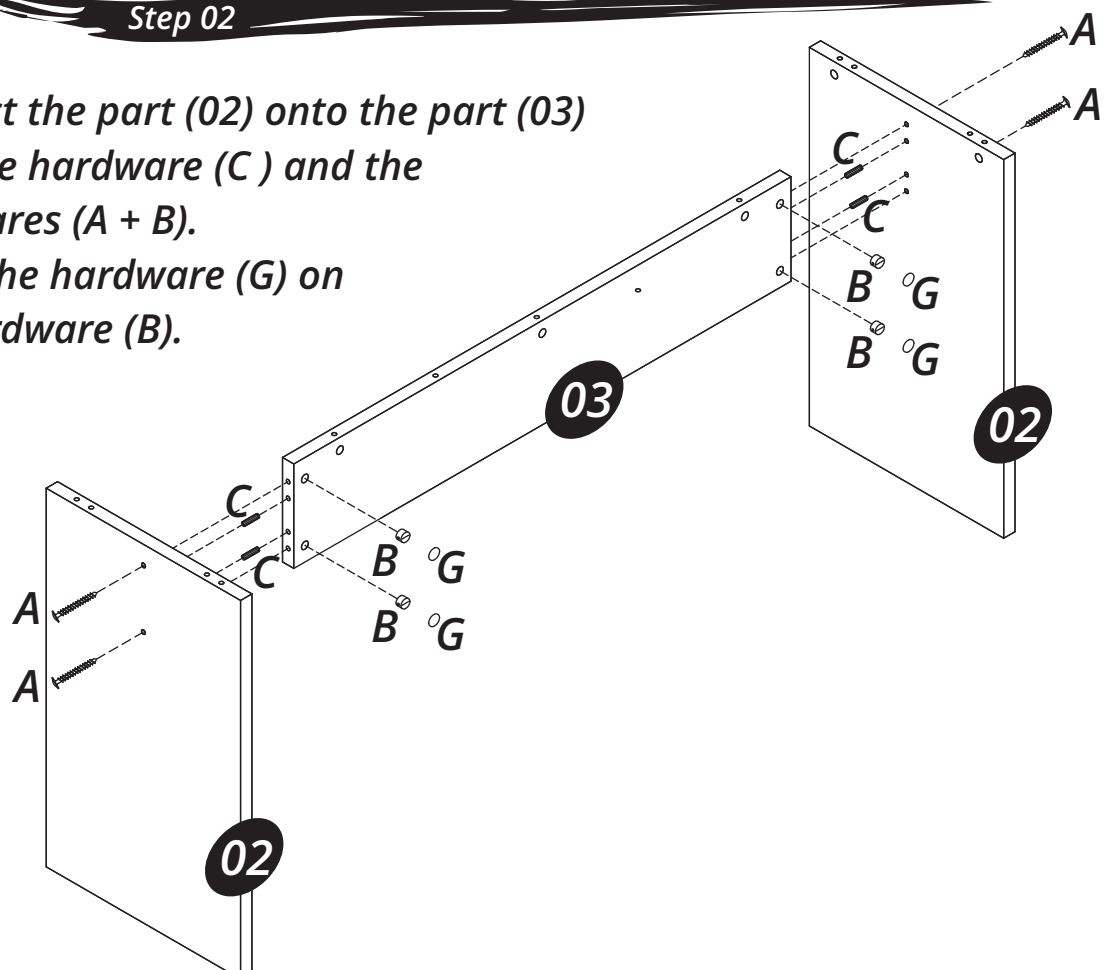
Step 01

Fix the hardware (F) into the Legs (02) and after connect the hardware (G) into the hardware (F).



Step 02

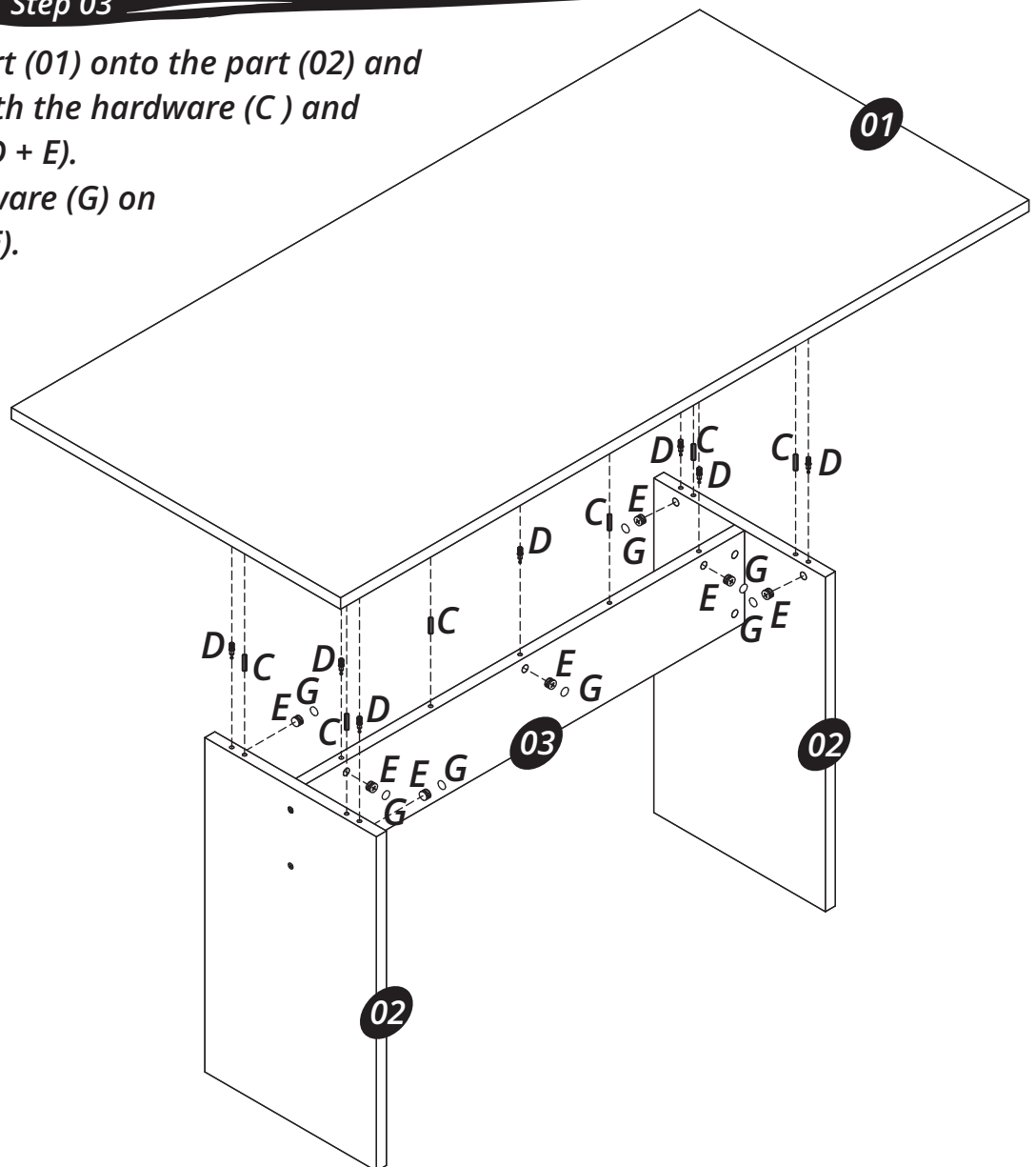
*Connect the part (02) onto the part (03) with the hardware (C) and the hardwares (A + B).
Apply the hardware (G) on the hardware (B).*



Step 03

Connect the part (01) onto the part (02) and the part (03) with the hardware (C) and the hardware (D + E).

Apply the hardware (G) on the hardware (E).



Step 04

Adjust the height of the Table using the hardware (F).

